

FLEX-Elektrowerkzeuge GmbH  
Bahnhofstraße 15  
71711 Steinheim  
Phone +49 7144 828-0  
Fax +49 7144 25899  
info@flex-tools.com  
www.flex-tools.com

**FLEX**  
Das Original

## Variable-speed 1500 watt angle grinder, 125 mm

**LE 15-11 125**

Order number 447.722



### Technical attributes

Max. disc diameter	125 mm
No load speed	2800-11500 rpm
Power input	1500 watt
Power output	960 watt
Tool fixture	M 14
Size (L x H)	310 x 105 mm
Cable length	4,0 m
Weight	2,3 kg

### Standard equipment

1 guard grinding 125 Ø	436.860
1 SoftVib handle	316.857
1 clamping flange	335.282
1 clamping nut M14	100.080

### Variable-speed 1500 watt angle grinder, 125 mm

- + Microprocessor control with soft start, restart protection after power failure, temperature monitoring, CDC-electronic feedback control
- + Highly efficient and resilient motor for more power output
- + Effective cooling and optimised carbon geometry ensure a long service life
- + Extensive dust protection for motor and gears
- + Anti-Kickback - this shuts down the motor on the disc being blocked
- + Compact and ergonomic shape
- + More ergonomic handling due to inclined side handle
- + Tool-free adjustment of safety guard
- + Lockable slide switch
- + Spindle lock
- + This universal angle grinder is suited for steel/metal surface finishing, for work on the site/renovation as well as for vehicle bodywork and construction firms
- + SoftVib handgrip with integrated, patented locknut wrench and vibration damping
- + Please note the maximum speed (rpm) of the accessories

## Accessories

### Cutting guard

Order number 437.069



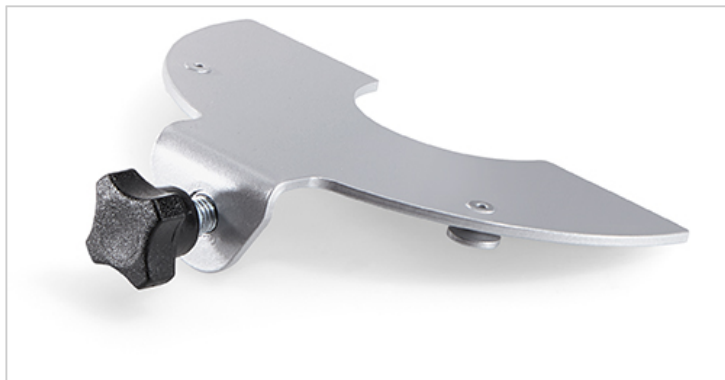
#### Technical attributes

Diameter in mm	125
QTY/PKG	1

Cutting guard, suitable for L 8-11 125 / LE 9-11 125, L 125 18.0-EC, L 10-11 125, LB/LBE 17-11 125, L/LE 14-11 125.

### Disc guard cover

Order number 446.041



#### Technical attributes

Diameter in mm	125
QTY/PKG	1

For tool-free conversion of the existing guard for cutting work.

### Dust extraction guard

Order number 445.479



#### Technical attributes

Diameter in mm	125
QTY/PKG	1

Extraction hood kit for working with cutting discs for 125 mm angle grinders. Consisting of extractor and aluminium cover. Can be fitted to the

FLEX-Elektrowerkzeuge GmbH  
Bahnhofstraße 15  
71711 Steinheim  
Phone +49 7144 828-0  
Fax +49 7144 25899  
info@flex-tools.com  
www.flex-tools.com

**FLEX**  
Das Original

existing guard without using any tools.

## Disc guard with removable edge segment

Order number 452.572



Technical attributes	
Dimensions in mm	125 Ø
QTY/PKG	1

Enables the operator to work very close to edges at maximum extraction power. Hexagonal recess bolt for height adjustment allows quick adjustment of extraction hood to tool height. Please note: for working with the guard and a diamond grinding disc we recommend an angle grinder with at least 1400 watt. Only for angle grinder with a guard with latching mechanism.

## Diamantjet - diamond cutting disc, standard, concrete

Order number 349.046



Technical attributes	
Dimensions in mm	125 Ø x 22,2
QTY/PKG	1

Fast, long-life universal cutting disc, suitable for concrete and stone

## Accessories

### Diamantjet - diamond cutting disc, premium, tile

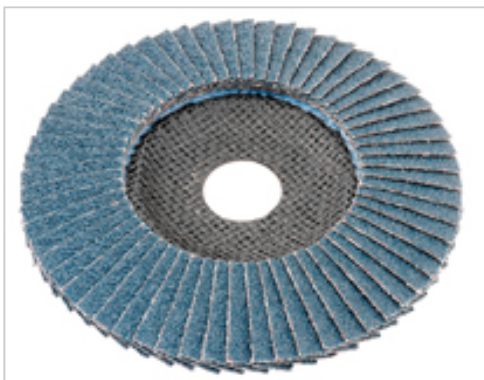
Order number 349.038



Technical attributes	
Dimensions in mm	125 Ø x 22,2
QTY/PKG	1

Fast, long-life tile cutting disc with closed diamond segment. Suitable for cutting all tiles, marble, slate, granite and natural stone. Precision cutting and low-noise

### Flap disc for metal and stainless steel, cambered



Technical attributes			
Dimensions in mm	Grit	QTY/PKG	Order number
125 Ø x 22,2	P 60	10	349.925
125 Ø x 22,2	P 80	10	349.933

Ideal for flap-grinding metals, stainless steel, alloyed and non-alloyed steel, light metals, non ferrous metals, construction steel, to smooth welds and cast iron. Removing welding spots and beads, processing welding seams, breaking and rounding edges. High material removal rate, guarantees effortless working without filling pores.

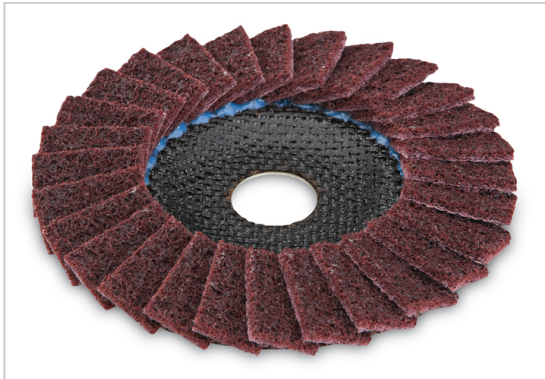
FLEX-Elektrowerkzeuge GmbH  
Bahnhofstraße 15  
71711 Steinheim  
Phone +49 7144 828-0  
Fax +49 7144 25899  
info@flex-tools.com  
www.flex-tools.com

**FLEX**  
Das Original

## Accessories

### SC-VL polishing flap wheel for metal and stainless steel, cambered

Order number 358.606



#### Technical attributes

Dimensions in mm	125 Ø x 22,2
Grit	medium
QTY/PKG	5

Polishing flap wheel for sanding, cleaning and finishing on stainless steel, steel, titanium alloys, light metals, non-ferrous metals and plastics. Remove any tarnish, flash rust, scale and scratches. Preparing, grinding and polishing welds.

### FixTec quick clamp nut M 14

Order number 313.459



#### Technical attributes

QTY/PKG	1
---------	---

For tool-less disc change, suitable for discs from Ø 115-150 mm.

## Accessories

### SoftVib side handle

Order number 316.857



SoftVib handle with integral, patented pin wrench (DE10117835A1) and vibration cushioning.

#### Technical attributes

Type	M 8
QTY/PKG	1

### Carrying case L-BOXX®

Order number 414.085



The robust storage and transport system L-BOXX® made of impact-resistant plastic conveys tools, accessories and consumables easily and comfortably to the place of use. Elaborate inserts provide order and clarity, ergonomically shaped handles and additional moulded recesses for flexible and comfortable handling. The unbeatably simple connection and disconnection of the different L-BOXXes optimises combined transportation. Fits the TÜV-tested in-vehicle equipment system from Sortimo perfectly and without adapters. Load capacity per L-BOXX® up to 25 kg, combined transportation up to 40 kg, the cover can be loaded up to 100 kg. Splash-proof. Without insert, with additional front handle.

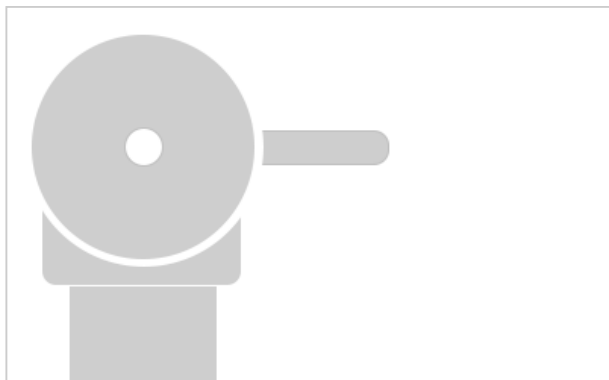
#### Technical attributes

External dimensions L x W x H	442 x 357 x 151 mm
Internal dimensions L x W x H	378 x 311 x 107 mm
Weight	2,2 kg
QTY/PKG	1

## Accessories

### Case insert

Order number 414.204



#### Technical attributes

QTY/PKG	1
---------	---

Suitable insert for carrying case L-BOXX® 136. For all angle grinder in the actual range from 800 up to 1400 watt (except L 3406 VRG).

### Brush, steel wire 0,3 mm

Order number 124.516



Corrugated, mount M 14

#### Technical attributes

Dimensions in mm	60 Ø
QTY/PKG	1

### Brush, steel wire 0,5 mm

Order number 124.524



Knot-type, mount M 14

#### Technical attributes

Dimensions in mm	65 Ø
QTY/PKG	1

## Accessories

### Velcro backing M 14

Order number 231.983

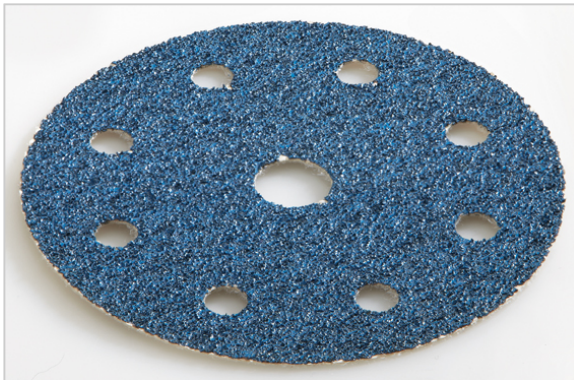


Elastic backing pad with velcro cover up to 12.000 rpm.

#### Technical attributes

Dimensions in mm	125 Ø
QTY/PKG	1

### Velcro sanding paper ZIRCOFLEX



Ideally suited for high removal rates and high load on wood and metal substrates. The support fabric is extremely tear-resistant and is characterised by high cost-effectiveness. Can be used with velcro pad max. Ø 125 mm.

#### Technical attributes

Dimensions in mm	Grit	QTY/PKG	Order number
125 Ø	A 40	25	393.185
125 Ø	A 60	25	393.193
125 Ø	A 80	25	393.207



## Accessories

### Velcro sanding paper CERAFLEX



#### Technical attributes

Dimensions in mm	Grit	QTY/PKG	Order number
125 Ø	K 80	50	393.215
125 Ø	K 120	50	393.223
125 Ø	K 180	50	393.231

Ideal for sanding stainless steel surfaces and grinding weld seams. The support fabric is extremely tear-resistant. Low heat generation and longer service life ensure high cost-effectiveness. Can be used with velcro pad max. Ø 125 mm.

### Natural fibre felt pad

Order number 393.355



#### Technical attributes

Dimensions in mm	125 Ø
Type	soft
QTY/PKG	5

Ideally suited for polishing stainless steel, non-ferrous metals, wood surfaces, mineral-based materials, paints, glass, acrylic glass (in conjunction with the correct polishes/agents and oils for sealing and care).

FLEX-Elektrowerkzeuge GmbH  
Bahnhofstraße 15  
71711 Steinheim  
Phone +49 7144 828-0  
Fax +49 7144 25899  
info@flex-tools.com  
www.flex-tools.com

**FLEX**  
Das Original

## Accessories

### Natural fibre felt pad

Order number 393.347



#### Technical attributes

Dimensions in mm	125 Ø
Type	hard
QTY/PKG	5

Ideally suited for polishing stainless steel, non-ferrous metals, wood surfaces, mineral-based materials, paints, glass, acrylic glass (in conjunction with the correct polishes/agents and oils for sealing and care).