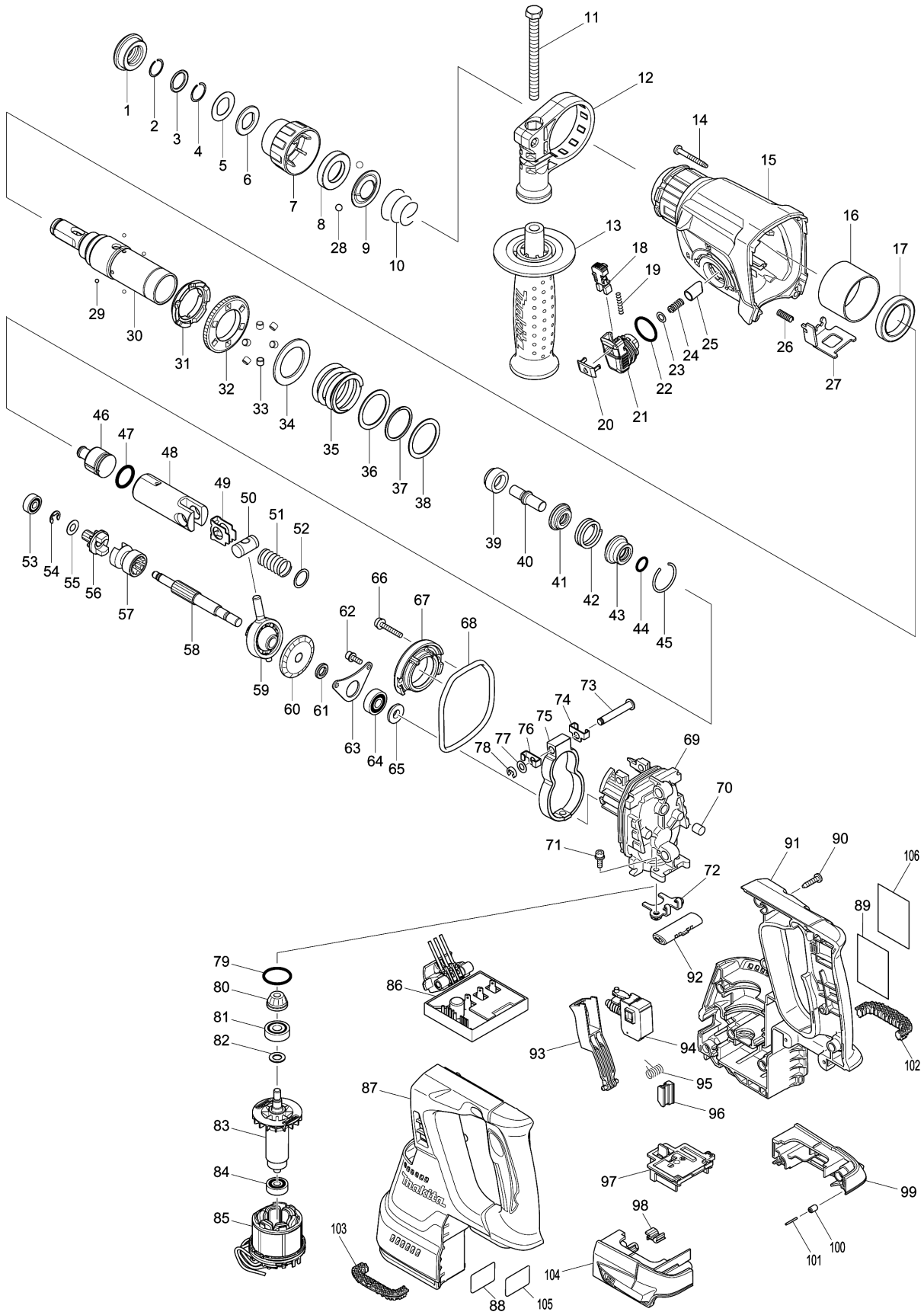


Model No.DHR242 24MM CORDLESS COMBI. HAMMER



Model No.DHR242 24MM CORDLESS COMBI. HAMMER

| Položaj | Številka dela | Opis | Sprememba | Količina | New/Old | Opcijsko 1 | Opcijsko 2 | Opomba |
|---------|---------------|--|-----------|----------|---------|---------------|---------------|--------|
| 001 | 286288-8 | Protiprašna zaščita HR2600 | | 1 | | | | |
| 002 | 233989-9 | Vzmetna podložka 14 | | 1 | | | | |
| 003 | 346221-3 | Ploska kovinska podložka 16 | | 1 | | | | |
| 004 | 233992-0 | Vzmetna podložka 15 | | 1 | | | | |
| 005 | 267437-6 | Ploska kovinska podložka 17 | | 1 | | | | |
| 006 | 424364-2 | Gumijasta podložka 16 | | 1 | | | | |
| 007 | 451533-2 | Plastični pokrov SDS glave | | 1 | | | | |
| 008 | 325813-1 | Kovinski obroček 21 | | 1 | | | | |
| 009 | 346177-0 | Vodilna podložka | | 1 | | | | |
| 010 | 233916-6 | Stožčasta tlačna vzmet 21-29 | | 1 | | | | |
| 011 | 266745-2 | Vijak s šesterokotno glavo M8X90 BHR242,BHR243 | | 1 | | | | |
| 012 | 453129-5 | Držalo ročaja BHR242,BHR243 | | 1 | | | | |
| 013 | 158057-6 | Ročaj 36 kpl. | | 1 | | | | |
| 014 | 266351-3 | Samovrezni vijak 4x35 | | 4 | * | | | |
| 014-1 | 265B69-5 | TAPPING SCREW 4X35 | O | 4 | | | | |
| 015-1 | 144354-6 | GEAR HOUSING COMPLETE | | 1 | | | | |
| C10 | 213345-9 | Tesnilo za olje 25 | | 1 | | | | |
| C20 | 810X86-8 | INDICATION LABEL | | 1 | | | | |
| 016 | 331890-3 | Iglični ležaj komplet | | 1 | | | | |
| 017 | 211294-4 | Kroglični ležaj 6806LLU | | 1 | | | | |
| 018 | 454112-5 | Blokirni gumb BHR242,BHR243 | | 1 | | | | |
| 019 | 234264-6 | COMPRESSION SPRING 3 | | 1 | | | | |
| 020 | 453131-8 | Pokrov gumba prestavnega mehanizma BHR242,BHR243 | | 1 | | | | |
| 021 | 453125-3 | Gumb prestavnega mehanizma BHR242,BHR243 | | 1 | | | | |
| 022 | 213381-5 | O Tesnilo 21 | | 1 | | | | |
| 023 | 253308-3 | Podložka 6 | | 1 | | | | |
| 024 | 234147-0 | Tlačna spiralna vzmet 5 | | 1 | | | | |
| 025-1 | 326850-8 | PUSH CORN | | 1 | | | | |
| 026 | 233360-7 | Tlačna spiralna vzmet 4 | | 1 | | | | |
| 027 | 346537-6 | Blokirna plošča BHR242,BHR243 | | 1 | | | | |
| 028 | 216022-2 | Kovinska kroglica 7.0 | | 2 | | | | |
| 029 | 216019-1 | Kovinska kroglica 3 | | 4 | * | | | |
| 029-1 | 216061-2 | STEEL BALL 3 | O | 4 | | | | |
| 030 | 140265-3 | Držalo orodja - pribora | | 1 | | | | |
| 031-1 | 332139-4 | DRIVING FLANGE | | 1 | | | | |
| 032-1 | 227360-7 | SPUR GEAR 51 | | 1 | | | | |
| 035 | 234148-8 | Tlačna spiralna vzmet 31 | | 1 | | | | |
| 036 | 267153-0 | Ploska kovinska podložka 30 | | 1 | | | | |
| 037 | 257932-4 | Spiralna blokadna podložka | | 1 | | | | |
| 038 | 267153-0 | Ploska kovinska podložka 30 | | 1 | | | | |
| 039 | 325783-4 | Tulec 9b | | 1 | | | | |
| 040 | 325789-2 | Udarnik HR2xx | | 1 | | | | |

Please order the parts with part number.

Print Date 17/4/2024

Model No.DHR242 24MM CORDLESS COMBI. HAMMER

| Položaj | Številka dela | Opis | Sprememba | Količina | New/Old | Opcijsko 1 | Opcijsko 2 | Opomba |
|---------|---------------|--|-----------|----------|---------|------------|------------|--------|
| 041 | 325792-3 | Podložka 10 | | 1 | | | | |
| 042 | 234149-6 | Tlačna spiralna vzmet 20 | | 1 | | | | |
| 043 | 325793-1 | Ohišje O tesnila B | | 1 | | | | |
| 044 | 213073-6 | Gumi obroček 9 | | 1 | | | | |
| 045 | 233979-2 | Vzmetna podložka 28 HR2020 | | 1 | | | | |
| 046 | 326139-4 | Leteči bat BHR242,BHR243 | | 1 | | | | |
| 047 | 213258-4 | O Tesnilo 17.5 | | 1 | | | | |
| 048 | 310345-1 | Batni cilinder | | 1 | | | | |
| 049 | 346036-8 | Plošča vodila | | 1 | | | | |
| 050 | 324215-8 | Batni sklep | | 1 | | | | |
| 051 | 234098-7 | Tlačna spiralna vzmet 14 | | 1 | | | | |
| 052 | 267447-3 | Ploska kovinska podložka 14 | | 1 | | | | |
| 053 | 211012-0 | Kroglični ležaj 606ZZ UC3030A | | 1 | | | | |
| 054 | 257336-0 | Zaporno tesnilo EXT U-6 | | 1 | | | | |
| 055 | 253186-1 | Ploska podložka 7 | | 1 | | | | |
| 056 | 227231-8 | Zobnik sklopke 10 | | 1 | | | | |
| 057-1 | 326849-3 | CLUTCH CAM A | | 1 | | | | |
| 058 | 326140-9 | Osovina pogona BHR242,BHR243 | | 1 | | | | |
| 059 | 219020-5 | Kroglični ležaj v ekscentru 10 | | 1 | | | | |
| 060 | 227588-7 | Spiralno stožčasti zobnik 32 BHR242, BHR243 | | 1 | | | | |
| 061 | 257323-9 | Kovinsko tesnilo 8 BHR242,BHR243 | | 1 | | | | |
| 062 | 922118-6 | Inbus vijak M4x12 | | 2 | | | | |
| 063 | 346038-4 | Podpora za kroglični ležaj B HR261D | | 1 | | | | |
| 064 | 211032-4 | Kroglični ležaj 608ZZ GA7050 | | 1 | | | | |
| 065 | 324212-4 | Kovinsko tesnilo 8 | | 1 | | | | |
| 066 | 922147-9 | Inbus vijak M4X25 BHR242 | | 2 | | | | |
| 067 | 141230-5 | Notranje vodilo kpl. BHR243,BHR242 | | 1 | | | | |
| 068 | 213767-3 | O Tesnilo 75 BHR242, BHR243 | | 1 | | | | |
| 069 | 318810-4 | ALU notranje ohišje BHR242,BHR243 | | 1 | | | | |
| 070 | 443153-6 | Protiprašna zaščita-filc | | 1 | | | | |
| 071 | 922118-6 | Inbus vijak M4x12 | | 2 | | | | |
| 072 | 346536-8 | Podpora za kroglični leža A BHR242,BHR243 | | 1 | | | | |
| 073 | 256536-9 | Zatič z ravno glavo HD 6 BHR242,BHR243 | | 1 | | | | |
| 074 | 346538-4 | Držalo protiuteži BHR242,BHR243 | | 1 | | | | |
| 075 | 313224-2 | Protiutež BHR242,BHR243 | | 1 | | | | |
| 076 | 346538-4 | Držalo protiuteži BHR242,BHR243 | | 1 | | | | |
| 077 | 253726-5 | Ploska kovinska podložka 6 LS0713 | | 1 | | | | |
| 078 | 961018-5 | Zaporno tesnilo E-5 | | 1 | | | | |
| 079 | 213008-7 | O tesnilo 22.4 | | 1 | | | | |

Please order the parts with part number.

Print Date 17/4/2024

Model No.DHR242 24MM CORDLESS COMBI. HAMMER

| Položaj | Številka dela | Opis | Sprememba | Količina | New/Old | Opcijsko 1 | Opcijsko 2 | Opomba |
|---------|---------------|--|-----------|----------|---------|---------------|---------------|--------|
| 080 | 141458-5 | Spiralno stožčasti zobnik 11 HR242D | | 1 | | | | |
| 081 | 210024-0 | Kroglični ležaj 608 2RS | | 1 | | | | |
| 082 | 253835-0 | Ploska podložka 8 | | 1 | | | | |
| 083 | 619293-4 | Rotor za BHR243 | | 1 | * | | | |
| 083-1 | 619737-4 | ROTOR | S | 1 | | | | |
| D10 | | INC. 80-82,84 | | | | | | |
| 084 | 210022-4 | Kroglični ležaj 626DDW 9526NB | | 1 | | | | |
| 085-2 | 529187-4 | STATOR ASS'Y | | 1 | | | | |
| 086 | 620241-8 | CONTROLLER BHR242, DHR242 | | 1 | * | | | |
| 086-1 | 620G68-8 | CONTROLLER | < | 1 | | | | |
| 087-3 | 183C02-0 | HOUSING SET | | 1 | | | | |
| D10 | | INC. 91 | | | | | | |
| 088 | 815B57-8 | DHR242 SERIAL NO. LABEL | | 1 | | | | |
| 089 | 815A38-6 | DHR242 NAME PLATE | | 1 | | | | |
| 090-1 | 266326-2 | Pločevinasti vijak 4x18 UB1103 | | 10 | | | | |
| 091-3 | 183C02-0 | HOUSING SET | | 1 | | | | |
| D10 | | INC. 87 | | | | | | |
| 092 | 453124-5 | L/D Gumbprestavnega mehanizma BHR242,BHR243 | | 1 | | | | |
| 093 | 453123-7 | Gumb stikala BHR242,BHR243 | | 1 | | | | |
| 094 | 650709-0 | SWITCH C3JW-1A-P BHR242, DHR242 | | 1 | | | | |
| 095 | 233598-4 | Torzijaska vzmet 6 BHR242,BHR243 | | 1 | | | | |
| 096 | 313226-8 | Odpiralna loputa BHR242,BHR243 | | 1 | | | | |
| 097 | 644808-8 | TERMINAL BHR242, DHR242 | | 1 | | | | |
| 098 | 424476-1 | Gumi blažilec BHR242,BHR243 | | 1 | | | | |
| 099 | 187377-1 | Ohišje priklopa baterije set BHR243,BHR242 | | 1 | | | | |
| C10 | 263005-3 | Gumi zatič 6 | | 2 | | | | |
| D10 | | INC. 104 | | | | | | |
| 100 | 263036-2 | Gumi zatič 5 | | 1 | | | | |
| 101 | 268184-2 | Zatič 1.5 | | 1 | | | | |
| 102 | 424473-7 | Blažilna guma BHR242,BHR243 | | 1 | | | | |
| 103 | 424473-7 | Blažilna guma BHR242,BHR243 | | 1 | | | | |
| 104 | 187377-1 | Ohišje priklopa baterije set BHR243,BHR242 | | 1 | | | | |
| C10 | 263005-3 | Gumi zatič 6 | | 2 | | | | |
| D10 | | INC. 99 | | | | | | |
| 105 | 893072-0 | Zaščitna prozorna nalepka | | 1 | * | | | |
| 106 | 890994-5 | Zaščitna prozorna nalepka BHR242,BHR243 | | 1 | * | | | |
| 107 | 424734-5 | SPONGE | | 2 | | | | |
| A01 | 324219-0 | Paličica globine | | 1 | | | | |
| B01 | 195833-7 | HAMMER SERVICE KIT | | 1 | | | | |

Please order the parts with part number.

Print Date 17/4/2024

Model No.DHR242 24MM CORDLESS COMBI. HAMMER

| Položaj | Številka dela | Opis | Sprememba | Količina | New/Old | Opcijsko 1 | Opcijsko 2 | Opomba |
|---------|---------------|-----------------------------------|-----------|----------|---------|---------------|---------------|--------|
| C10 | 195127-0 | OIL VESSEL SET | | 2 | | | | |
| D10 | | INC. 1,2,4,6,28,44,45,47 | | | | | | |
| F38-3 | 197606-4 | BATTERY BL1830B SET (2PIECES) | O | 1 | * | | | |
| F48-1 | 199977-5 | DUST CASE SET | O | 1 | | | | |
| F50-1 | 199557-7 | FILTER SET | O | 1 | | | | |
| F52-3 | 197267-0 | BATTERY BL1840B SET | O | 1 | | | | |
| F53-3 | 197265-4 | BATTERY BL1840B SET | O | 1 | | | | |
| F54-3 | 197273-5 | BATTERY BL1840B SET(2PIECES) | O | 1 | | | | |
| F69 | 199565-8 | DX06DUST EXTRACTION SYSTEM SET | | 1 | | | | |

Please order the parts with part number.

Print Date 17/4/2024