

FLEX-Elektrowerkzeuge GmbH
Bahnhofstraße 15
71711 Steinheim
Phone +49 7144 828-0
Fax +49 7144 25899
info@flex-tools.com
www.flex-tools.com

FLEX
Das Original

Handy-Giraffe® wall and ceiling sander

WSE 7 Vario

Order number 377.821



Technical attributes

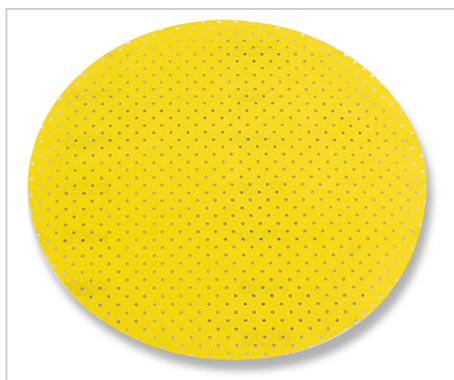
Power input	710 watt
Power output	420 watt
No load speed	600-1950 rpm
Corner sander no-load speed	1800-5400 opm
Sanding disc Ø	225 mm
Size (W x L x H)	320 x 120 x170 mm
Cable length	4,0 m
Weight	2,8 kg

Handy-Giraffe® wall and ceiling sander

- + VR electronic control: stepless speed selection, tachogenerator-controlled constant speed, overload protection, re-start protection and temperature monitoring
- + Completely cast electronic components prevents damage due to metal dust. The 3-fold winding protection reduces motor wear, increases service life
- + Grip hood for easy handling and precise working
- + With interchangeable head system for round- and triangular sanding head for sanding close to edges
- + Effective dust extraction from between the brush ring and the sanding pad prevents clogging of the abrasive and promotes a dust-free working environment
- + Defined hose guidance and effective dust extraction due to large hose cross-section. The suction hose is directly attached to the tool by the FLEX clip-system
- + Lightweight and easy-to-use on small surfaces, tight spaces
- + Ideally suited for sanding plaster boards, solid styropor insulation slabs, preparation for painting
- + Machine without sanding head as an addition for the Vario-Giraffe® WST 700 VV and WST 700 VV Plus
- + Not suitable with interchangeable head system of GE 7

Accessories

Velcro sanding paper (perforated)

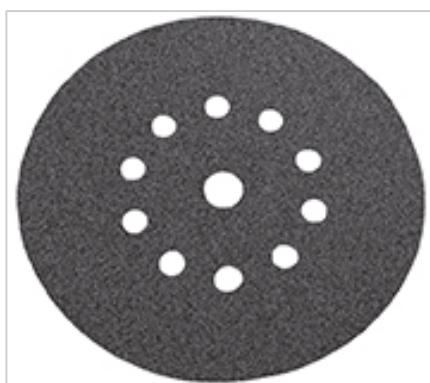


For leveling coarse surface irregularities.

Technical attributes

Dimensions in mm	Grit	QTY/PKG	Order number
225 Ø	P 40	25	280.739
225 Ø	P 60	25	260.233
225 Ø	P 80	25	260.234
225 Ø	P 100	25	260.235
225 Ø	P 120	25	282.405
225 Ø	P 150	25	311.995
225 Ø	P 180	25	311.987
225 Ø	P 220	25	260.236

Velcro sanding paper SELECTFLEX



For sanding joint filler in drywall construction, punched for dust extraction.

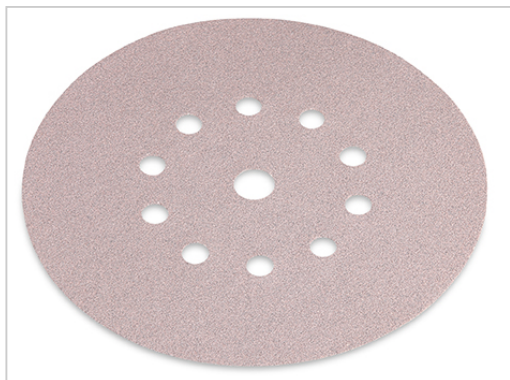
Order number 350.079

Technical attributes

Dimensions in mm	225 Ø
Grit	P 16
QTY/PKG	10

Accessories

Velcro sanding paper SELECTFLEX

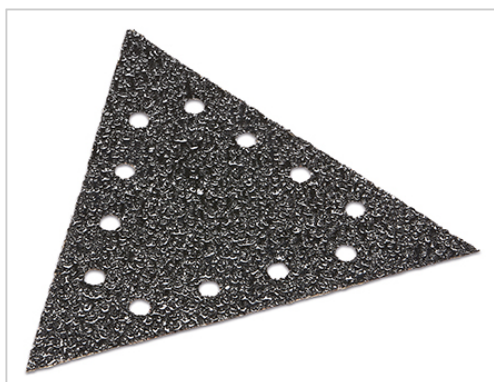


Technical attributes

Dimensions in mm	Grit	QTY/PKG	Order number
225 Ø	P 40	20	370.924
225 Ø	P 60	25	348.503
225 Ø	P 80	25	348.511
225 Ø	P 100	25	348.538
225 Ø	P 120	25	349.216
225 Ø	P 150	25	349.224
225 Ø	P 180	25	349.232
225 Ø	P 220	25	348.546
225 Ø	5x P 80/100/120/150/180	25	370.932

For sanding joint filler in drywall construction, punched for dust extraction.

Velcro sanding paper SELECTFLEX



Order number 350.095

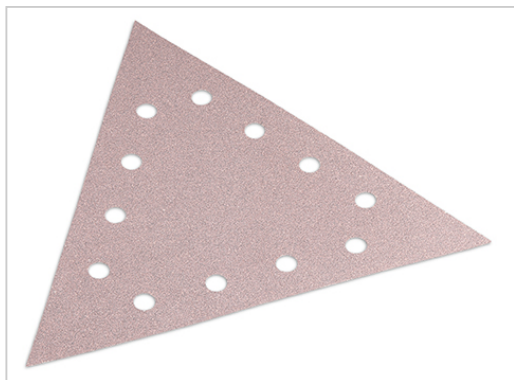
Technical attributes

Dimensions in mm	290
Grit	P 16
QTY/PKG	10

For sanding joint filler in drywall construction, punched for dust extraction.

Accessories

Velcro sanding paper SELECTFLEX



Technical attributes

Dimensions in mm	Grit	QTY/PKG	Order number
290	P 40	20	370.940
290	P 60	25	348.554
290	P 80	25	348.562
290	P 100	25	348.570
290	P 120	25	349.240
290	P 150	25	349.259
290	P 180	25	349.267
290	P 220	25	348.589
290	5x P 80/100/120/150/180	25	370.959

For sanding joint filler in drywall construction, punched for dust extraction.

Superfinishing pad



Technical attributes

Dimensions in mm	Grit	QTY/PKG	Order number
225 Ø	S 320	10	281.026
225 Ø	S 1200	10	281.018

For glossy and high gloss surfaces for filled surfaces.

Accessories

Velcro sanding fleece



Pre-sanding, cleaning and matting existing paint coatings prior to repainting (large-vehicles, containers ...)

Technical attributes

Dimensions in mm	Grit	QTY/PKG	Order number
225 Ø	A 100	10	281.042
225 Ø	A 180	10	281.034

Velcro polishing sponge

Order number 280.992



Polishing painted surfaces.

Technical attributes

Dimensions in mm	225 Ø
Grit	soft
QTY/PKG	5

Round sanding head

Order number 350.346



Optimally suitable for finishing large surfaces on walls and ceilings. Effective dust extraction, high surface removal rate.

Technical attributes

QTY/PKG	1
---------	---

FLEX-Elektrowerkzeuge GmbH
Bahnhofstraße 15
71711 Steinheim
Phone +49 7144 828-0
Fax +49 7144 25899
info@flex-tools.com
www.flex-tools.com

FLEX
Das Original

Accessories

Triangular sanding head

Order number 388.289



Technical attributes

QTY/PKG	1
---------	---

Ideally suited for the processing of corners and edges. The eccentric movement of the sanding head guides the sanding tool directly up to the edge. With exchangeable protective corners with sliding strips.

Velcro backing pad Ø 225, round

Order number 350.362



Technical attributes

Type	hard
QTY/PKG	1

Hard backing pad with high removal rate, with use with velcro backed abrasives. Recommended for use with diamond grinding pads Ø 225.

Accessories

Velcro backing pad Ø 225, round

Order number 352.306



Technical attributes	
Type	medium
QTY/PKG	1

Medium backing pad for sanding down soft fillers. Velcro system for fixing of abrasives. Recommended for use with diamond grinding pads Ø 225.

Velcro backing pad Ø 225, round

Order number 366.862



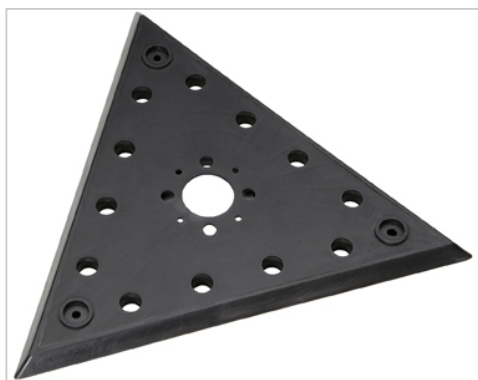
Technical attributes	
Type	soft
QTY/PKG	1

Soft. Highly flexible backing pad. Facilitates handling and allows for sensitive working. Prevents damage (swirl marks) when the pad touches the surface. For use with velcro backed abrasives.

Accessories

Velcro triangular backing pad

Order number 354.988



Technical attributes

QTY/PKG	1
---------	---

Backing pad for plaster or hard filler compounds in drywall construction, for use with velcro backed abrasives.

Carrying case

Order number 366.641



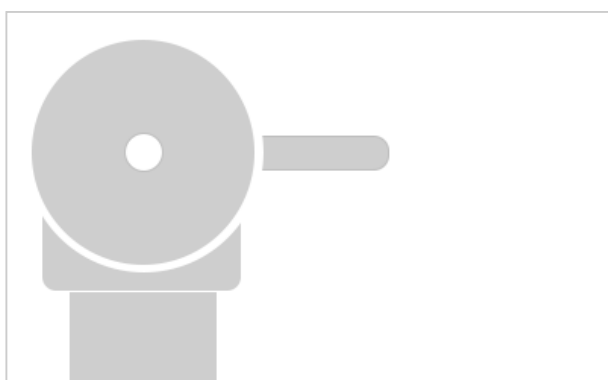
Technical attributes

Size (W x L x H)	609 x 409 x201 mm
QTY/PKG	1

Made of impact-resistant plastic for the WSE 7.

Case insert - lid

Order number 383.902



Technical attributes

QTY/PKG	1
---------	---

Suitable insert for round grinding head and sandpaper for the cover of the carrying case 366.641.

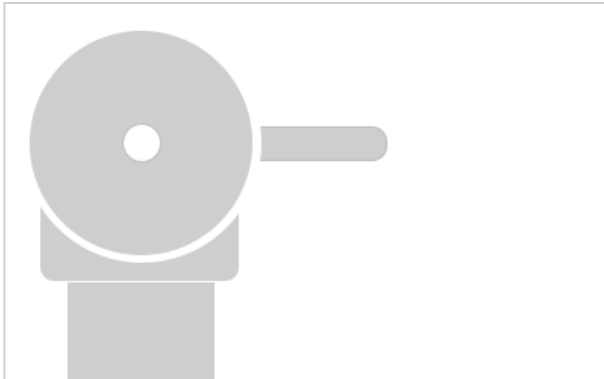
FLEX-Elektrowerkzeuge GmbH
Bahnhofstraße 15
71711 Steinheim
Phone +49 7144 828-0
Fax +49 7144 25899
info@flex-tools.com
www.flex-tools.com

FLEX
Das Original

Accessories

Case insert - bottom

Order number 383.899



Technical attributes

QTY/PKG	1
---------	---

Suitable insert for the WSE 7, round sanding head and triangular sanding head for the base of the carrying case 366.641.

Carrying case

Order number 389.986



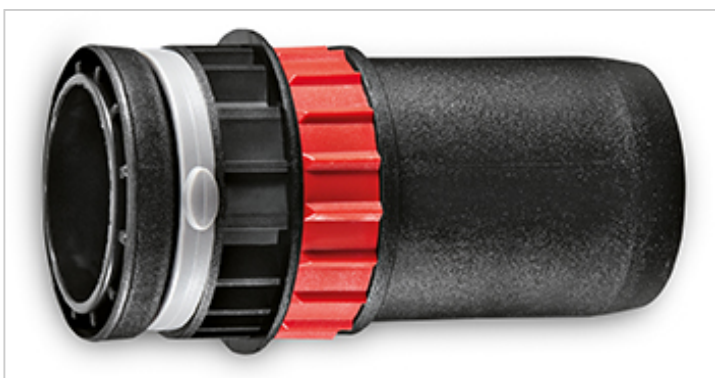
Technical attributes

QTY/PKG	1
---------	---

Made of shock-resistant plastic for the WST and WSE 7 as well as for sanding tools and exchangeable heads.

Clip adapter

Order number 408.360



Technical attributes

QTY/PKG	1
---------	---

For connecting a FLEX power tool to extraction units from other manufacturers. Suitable for hoses inside \varnothing 27 mm, outside \varnothing 36 mm, with

FLEX-Elektrowerkzeuge GmbH
Bahnhofstraße 15
71711 Steinheim
Phone +49 7144 828-0
Fax +49 7144 25899
info@flex-tools.com
www.flex-tools.com

FLEX
Das Original

auxiliary air adjustment.

Velcro sanding net NETFLEX

Order number 446.173



Technical attributes	
Dimensions in mm	225 Ø
Grit	P 80
QTY/PKG	25

For levelling out unevenness or for roughing up and for preparing for further layers of filler or plaster (Q1-Q2).

Velcro sanding net NETFLEX

Order number 446.181



Technical attributes	
Dimensions in mm	225 Ø
Grit	P 100
QTY/PKG	25

For levelling out unevenness or for roughing up and for preparing for further layers of filler or plaster (Q1-Q2).

Accessories

Interface Ø 225, round

Order number 377.848



Technical attributes

QTY/PKG	2
---------	---

Interface as absorbing element between grinding pad and abrasive paper. Ideal for finishing surfaces. Improves the dust extractor action and lengthens the service life of the sanding disks. Recommendation: work with interface for in-between and final sanding involving finer grain. Do not work with interface for rough sanding involving coarse grain and when using sanding fleece.

Velcro sanding net NETFLEX

Order number 446.203



Technical attributes

Dimensions in mm	225 Ø
Grit	P 120
QTY/PKG	25

For finishing work and for fine filling work in dry construction (Q2-Q4).

Accessories

Padded adapter for velcro paper



Velcro system for attaching the abrasive discs. Suitable for deburring filled-in surfaces. For WSE 7, WST 700.

Technical attributes

Type	Height	QTY/PKG	Order number
supersoft	13	1	437.956
hard	13	1	439.800

Velcro sanding net NETFLEX

Order number 446.211

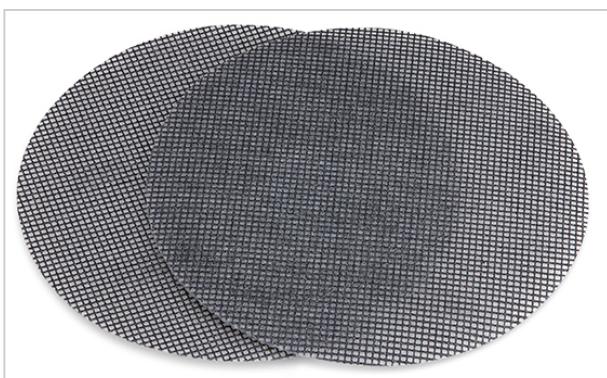


For finishing work and for fine filling work in dry construction (Q2-Q4).

Technical attributes

Dimensions in mm	225 Ø
Grit	P 150
QTY/PKG	25

Velcro sanding grid



For rapid removal of surface irregularities.

Technical attributes

Dimensions in mm	Grit	QTY/PKG	Order number
225 Ø	grit 80	25	260.237
225 Ø	grit 100	25	260.230

Accessories

Interface Ø 225, round

Order number 470.678



Technical attributes

QTY/PKG	2
---------	---

Interface as absorbing element between grinding pad and abrasive paper. Ideal for finishing surfaces. Improves the dust extractor action and lengthens the service life of the sanding disks. Recommendation: work with interface for in-between and final sanding involving finer grain. Do not work with interface for rough sanding involving coarse grain and when using sanding fleece.

Velcro backing pad Ø 225, round

Order number 441.120



Technical attributes

Type	supersoft
QTY/PKG	1

Supersoft. The sanding disc enables extremely gentle positioning on the wall. The set consists of a backing pad, Velcro adapter (KAD D225/13), clamping disc and screw. For WST 700 VV, WSE 7.